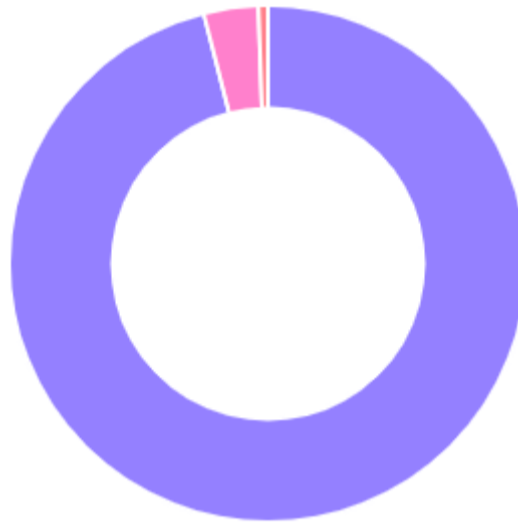


Your Ancestry Admixture

Based on your DNA, you are **95.9% East Asian**, **3.4% South Asian**, and **0.6% African**.



East Asian 95.9%

Metropolitan Malay in Singapore	95.9%
Kinh in Ho Chi Minh City, Vietnam	0%
Japanese in Tokyo, Japan	0%
Southern Han Chinese	0%
Han Chinese in Beijing, China	0%
Chinese Dai in Xishuanagbanna, China	0%

South Asian 3.4%

Sri Lankan Tamil from the UK	3.4%
Punjabi from Lahore, Pakistan	0%
Indian Telugu from the UK	0%
Gujarati Indian from Houston, Texas	0%
Bengali from Bangladesh	0%

African 0.6%

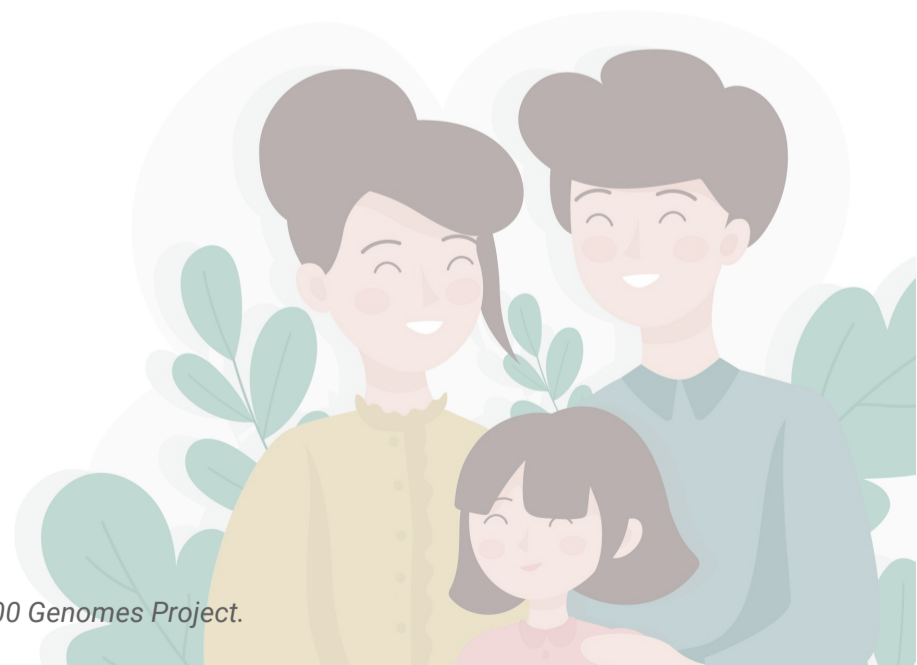
African Carribean in Barbados	0.6%
Mende in Sierra Leone	0%
Yoruba in Ibadan, Nigeria	0%
Luhya in Webuye, Kenya	0%
Gambian in Western Division – Mandinka	0%
American's of African Ancestry in SW USA	0%
Esan in Nigera	0%

European 0%

Toscani in Italia	0%
Iberian population in Spain	0%
British in England and Scotland	0%
Finnish in Finland	0%
Utah Residents (CEPH) with Northern and Western European ancestry	0%

Ad-mixed American 0%

Puerto Rican from Puerto Rica	0%
Peruvian from Lima, Peru	0%
Mexican Ancestry from Los Angeles USA	0%
Colombian from Medellian, Colombia	0%



Control population of ancestry admixture are from 1000 Genomes Project.

